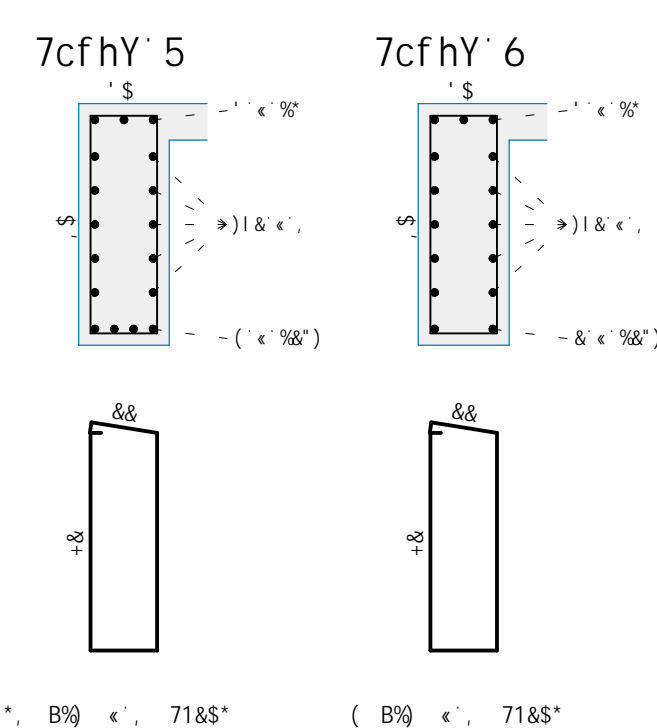
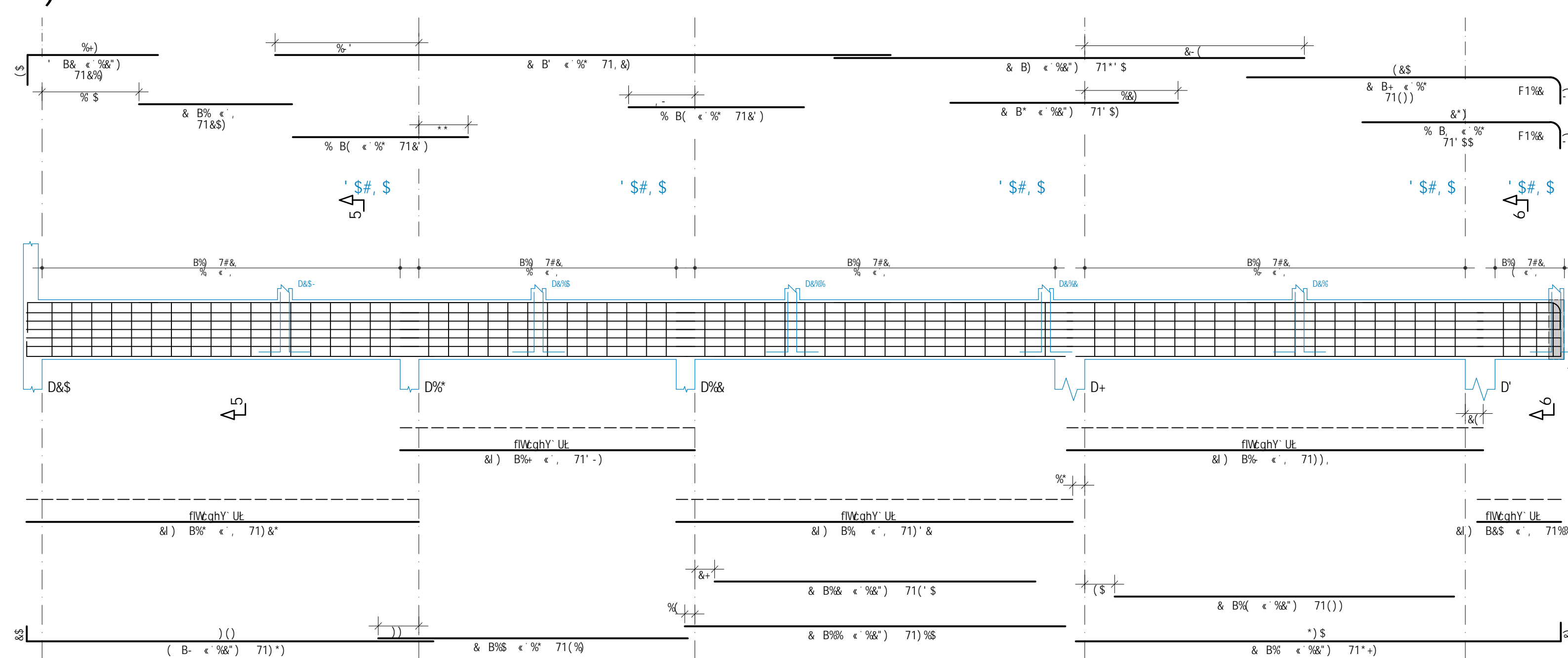
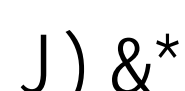
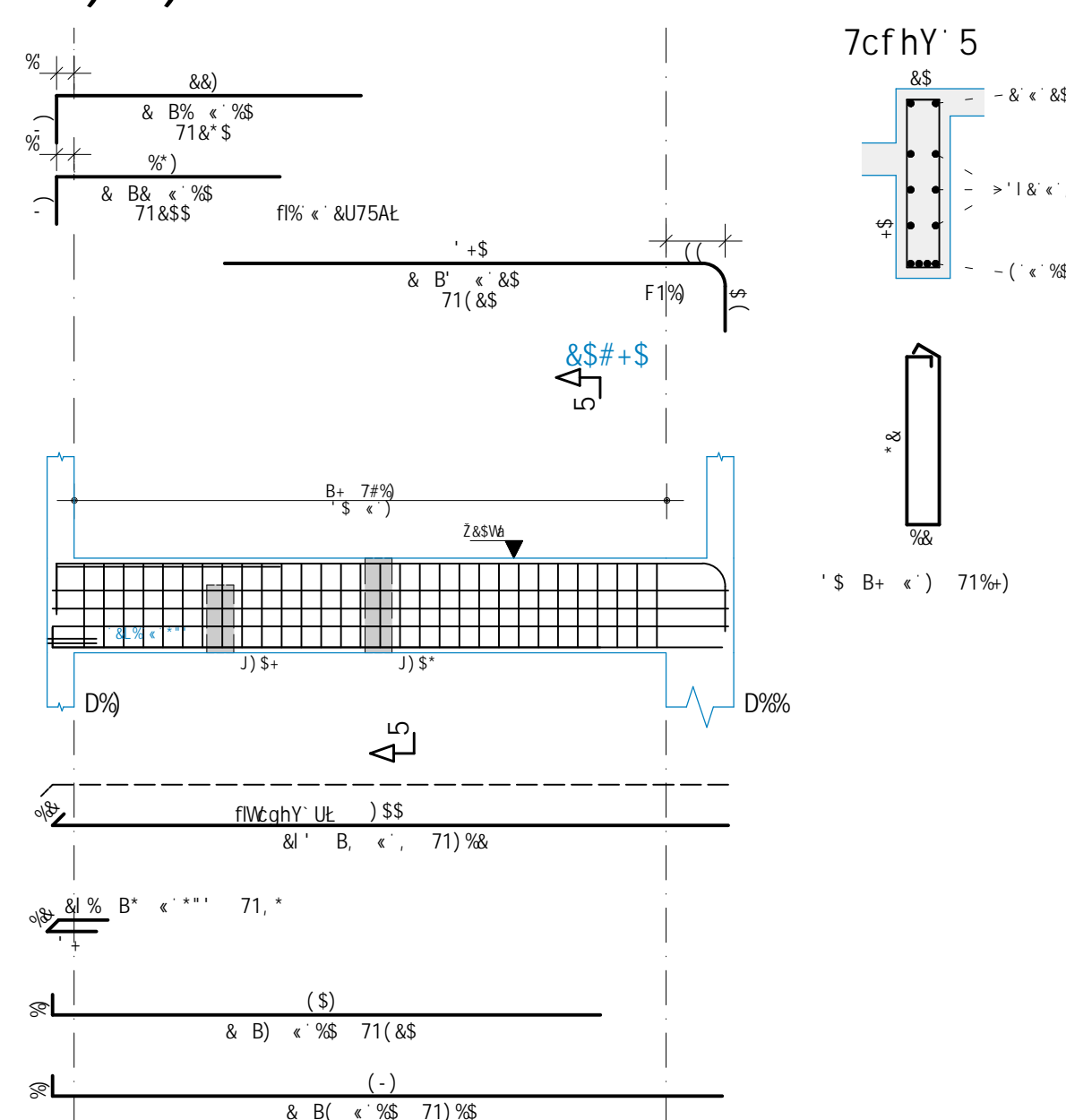
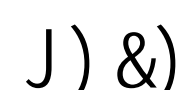
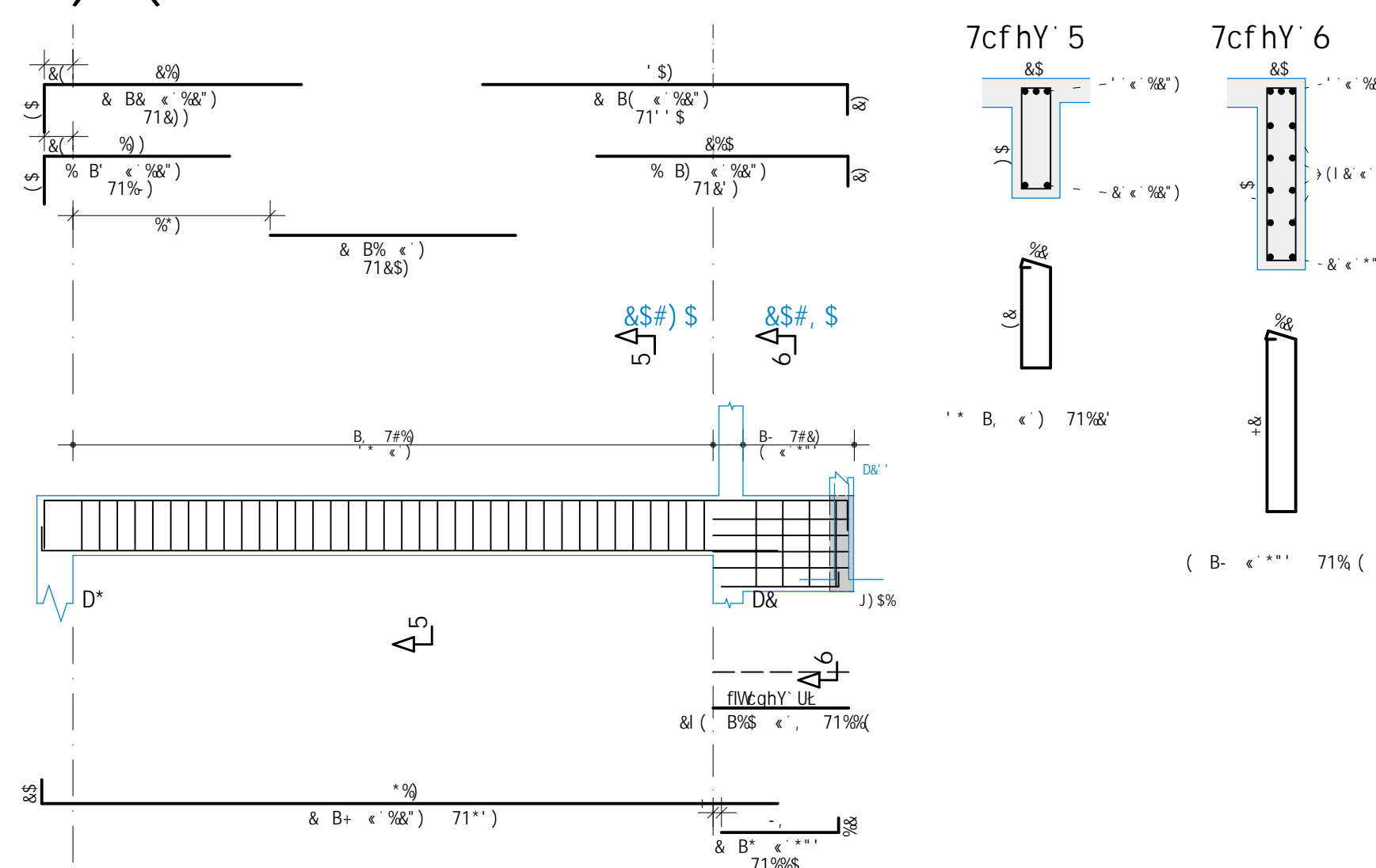
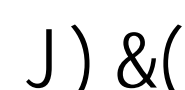
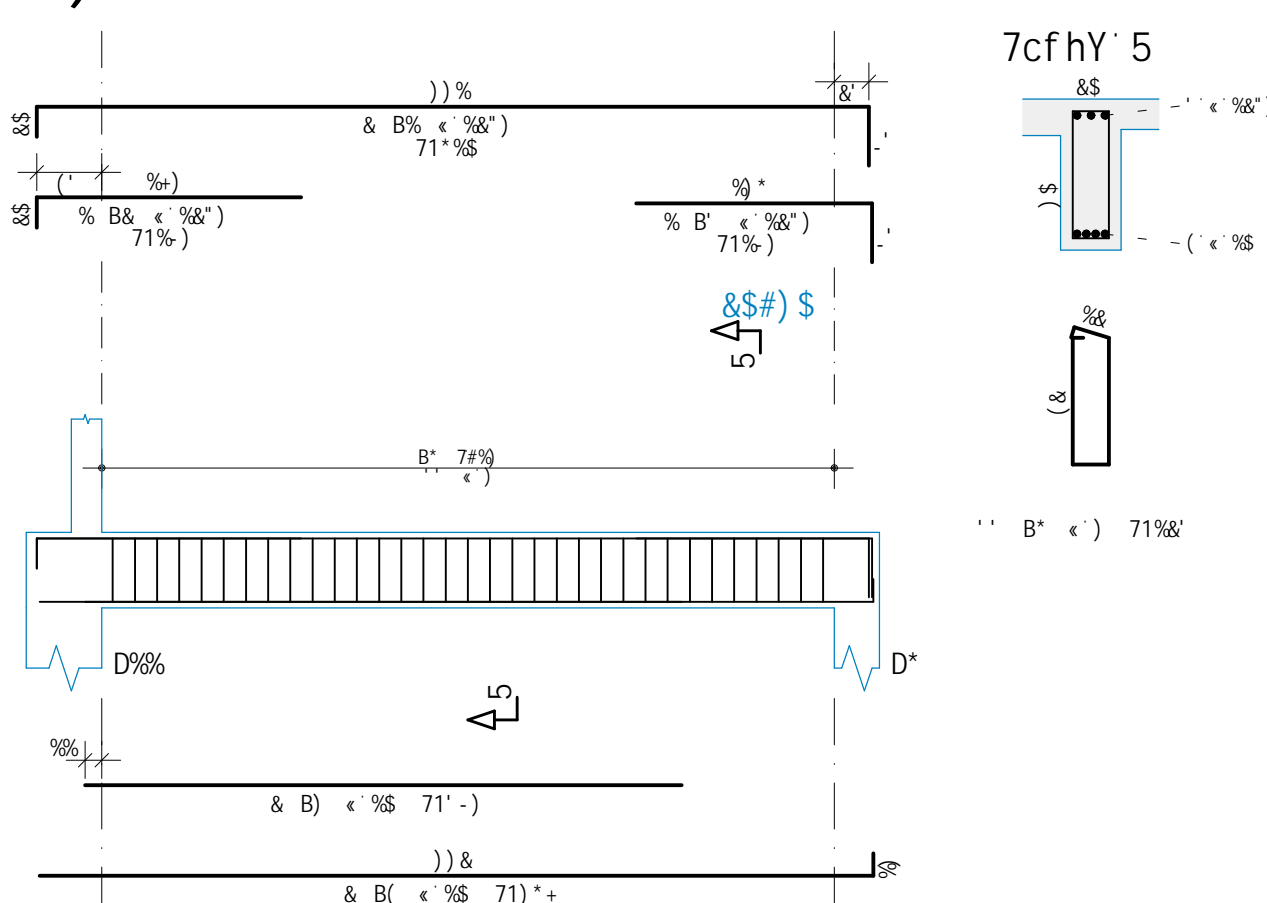
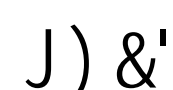
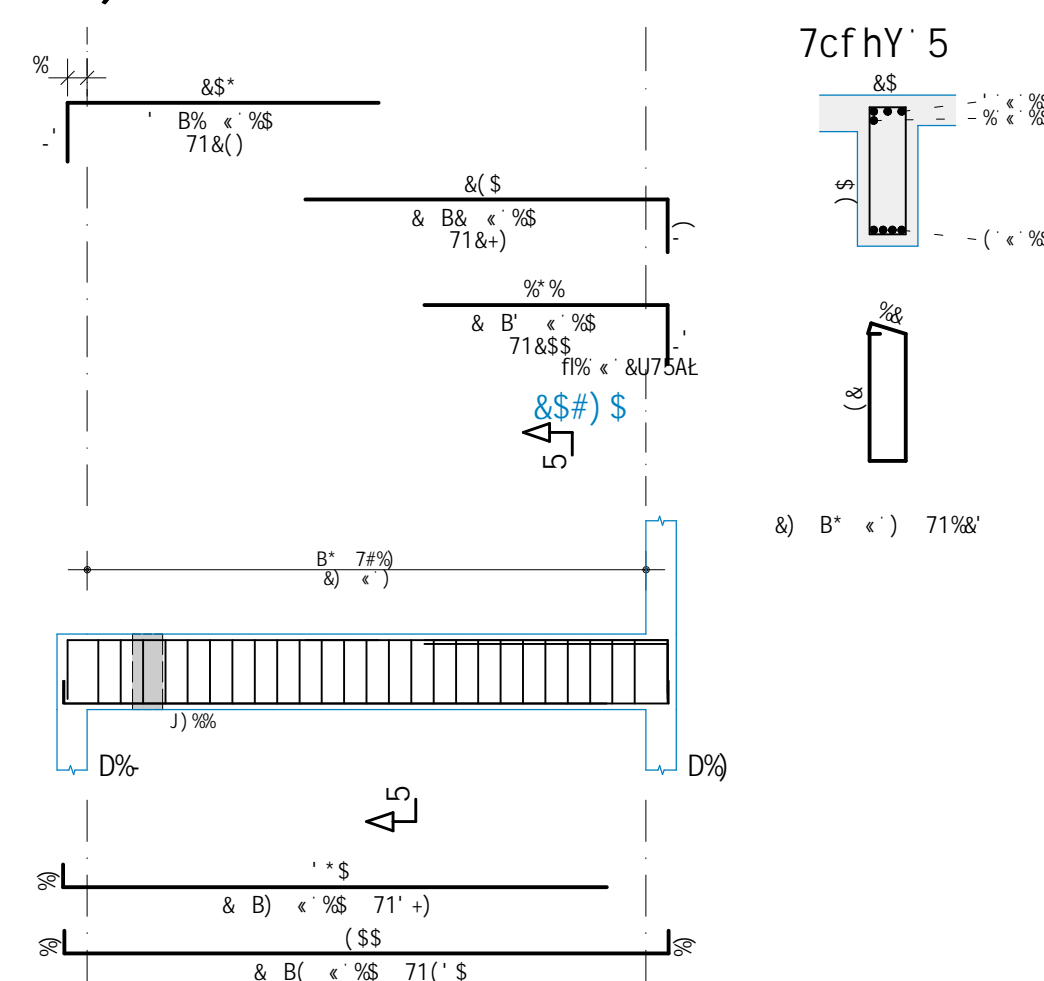
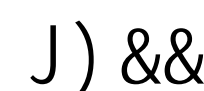
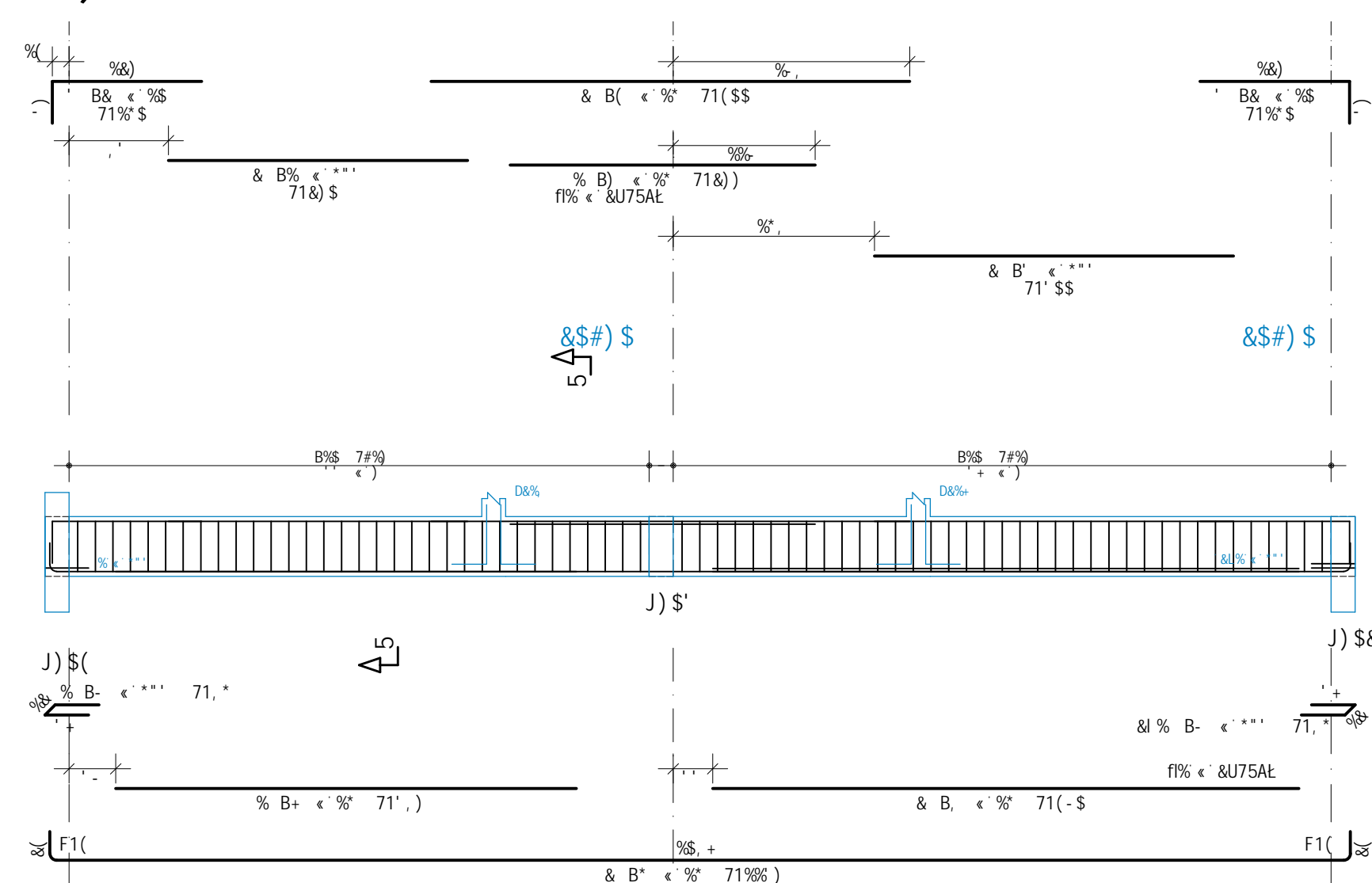
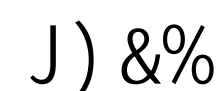
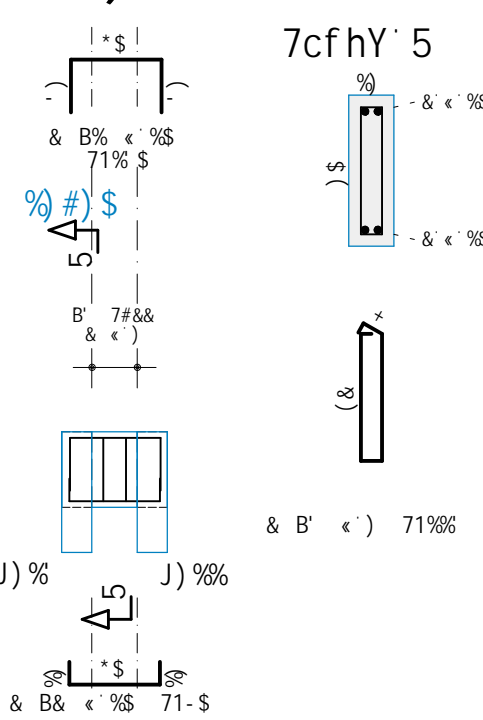


J) &\$



989A	FYgl ac XY U. c dcf Y YaYbhc	D9GC [Z	D9GC [Z%
J) 85			
J) 8%		+	%*
J) 8&		8)	8*
J) 8*			
J) 8)		(%	()
J) 8*		8*	8)

[illegible]

F9GI AC 89 5uCd				
5uC	6=H	7CAD	D9GC	
	aa	a	_I_Z	
5\$	)	& %	(\$	
5\$	..	&)	)	
5\$		( \$)	) \$	
5\$	%&	( %	) %	
5\$	%&	% (	) %	
5\$	%&	% (	) %	
5\$	%&	% (	) %	
D9gc	HcHu	\$5 1	(\$ 7	
D9ac	HcHu	\$5 1	) % 7	

$J_c^+ | aY^+ XY^- WcbW^+ Yhc^+ XY^- J = 5G$ 
 $\begin{pmatrix} 9 | c \\ \cdot \cdot \cdot \end{pmatrix}$ 
 $\begin{pmatrix} UWg \\ +^+ +^+ a^+ \end{pmatrix}$   
 $HU | U^+ XY^- UfaUX | fU$ 
 $\begin{pmatrix} \cdot \cdot \cdot \\ \cdot \cdot \cdot \end{pmatrix}$ 
 $\begin{pmatrix} +^+ S^+ [Z^+ a^+ \end{pmatrix}$

3669f:15ue9G:9F5-G

9GD97m: =75u6'9G' Hb 7B/: 9F5:G			
Zu:	' S ADU n7' S G8S 1%8	7G6F=A9HC	
5 F: 58'C: F5I 8C:	Vf  hU % flazi' % -aat.	m WPC: ( ) GAD: 15G	
Gell AD:	%Zi & W6	J: =5G:	( \$ aa
9u:	%: DU	=5G:9G	) aa
755:	0222		1:885uEC. ( \$ aa
: SHCF 5#7.		7GBH9BUEC:	( \$ aa
		4B=5F9G 9A 7GBH8G 7CA GC0C: ( ) aa	
	m WPC: ( ) GAD: 15G	5uC:	75 ) Y 75 : f   fJ   hUy Uq YZ Yffcc:

FS(		
FS'		
FS&		
FS%		
FS\$	01/09/2025	PROJETO EXECUTIVO - LICITAÇÃO DA OBRA
b6 r1y]g-c	XUHU	XYgWJ] , -C




SEDE DAS PROMOTORIAS DE JUSTIÇA DE IPATINGA-MG

A=B=GhVf=C`Di 6@=7C`A=B5G` ; 9F5=G		
7C9B9`8C`		
F5A5UEC`89`J= : 5G`!`A5E	J)J&\$`#`J)8%`#`J)8&`#`J)&`J)&` J)J&`(#`J)8)`#`J)&`#`J)&`	
5`H3`C`8C`DF`C94C`	5G5-B5H`F`5`	8-67`Dh-B5`
F<5F`E`89`5@A=85`75F8CGC`		9GH
9B`9B`94C`7J`J`u#`	79`5`A`7C`J`A`5F8`	
F9G0C9GJ`9W`H4`7B`7C`	5G5-B5H`F`5`	9450C`8C`DF`C94C`
F<5F`E`89`5@A=85`75F8CGC`		9L97H`H=J`C`
9B`9B`94C`7J`J`u#`	79`5`A`7C`J`A`5F8`	
7070`89B587C`8C`DF`C94C`	5G5-B5H`F`5`	:`Dh-5`
5B8F9`J` *@5DF9` : 5		
3E1`H4H`9C`7`F`85B`G45`	CAU`=`A83754-7`	
9C75H`	8969C`	76B`-`8C`8C`DF`C94C`
%`J`\$`	F<5F`E`75F8CGC`	%)`\$`&8&`
		071/108